

Avoid Fake Montessori Material

Internet searches for "Montessori" mostly lead to inauthentic material that mimics some aspect of real Montessori equipment.

Fake material damages your child's educational development.

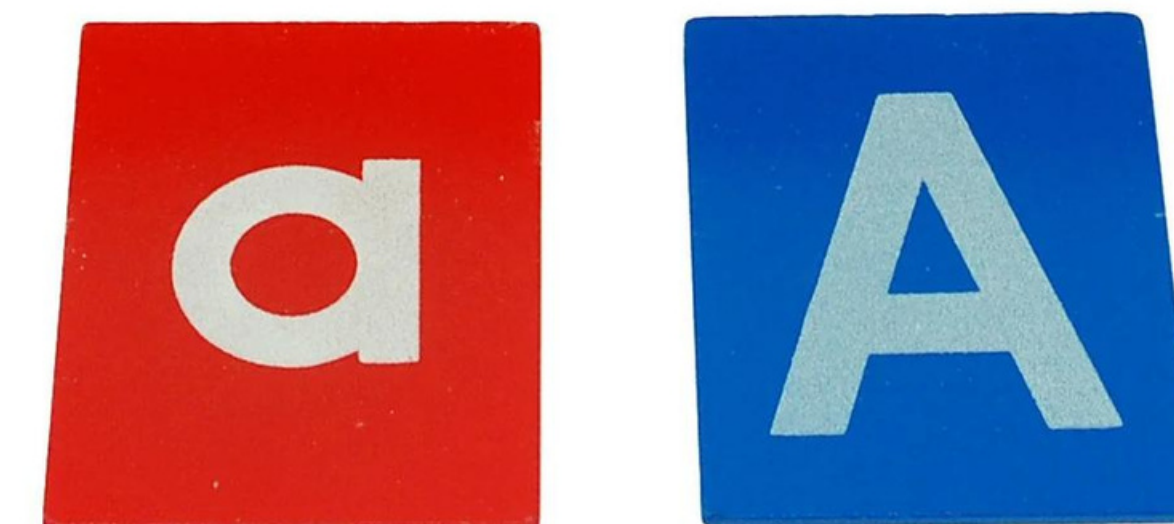
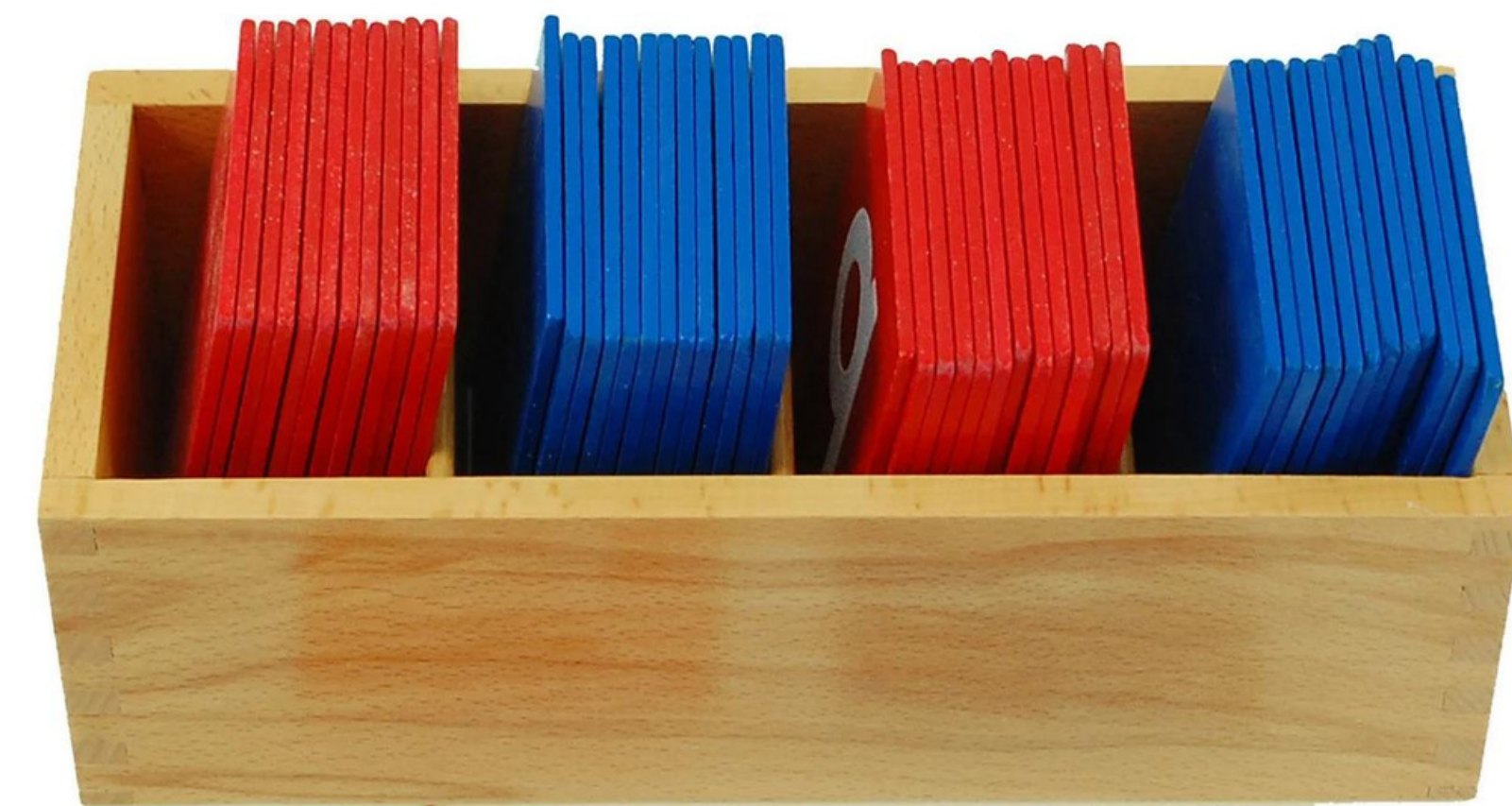
Colors Require Consistency

Never present capital letters to a child who cannot read

Correct



Incorrect



Colors should be muted, not bright.

Sandpaper Letters

A child's first introduction to letters and letter sounds

Correct



Incorrect



Slouch=cheap, unergonomic chairs.

Never teach with capital letter blocks.

Avoid Cheap Plastic Furniture

Bone density and skeletal development happen in childhood

Incorrect Chair and Table

If your child slouches, the furniture needs to be upgraded. Do you see how the child's slouch matches the curve in the chair? Do you see how the table is too high?



Movable Alphabet

Early childhood is NOT the time for cheap imitations

Correct



Incorrect



More is NOT Better

Did you buy it? Toss it.

NO.

Toss anything that looks like this.

Question: Why is "sofa" not a phonetic word?

Incorrect



Harmful Material

This work is taken straight from
failing PUBLIC schools.

NO!!

In Montessori, children practice syllable
work in the context of poetry study.

CLUE: A random mat usually signals fake
material.

Incorrect

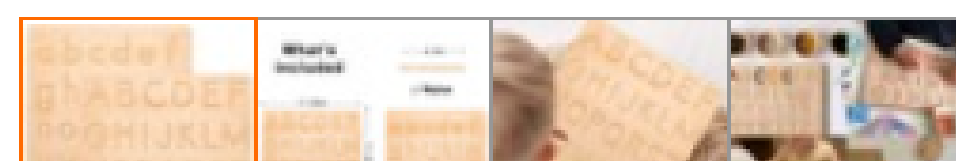


Incorrect

The reason these incorrect pieces proliferate is because they are profitable to resell.



[View larger image](#)



Ready to Ship [In Stock](#) [Fast Dispatch](#)

Double-sided Letter Tracking Board, Wooden Alphabet Tracing Board from Montessori Learning Skills Toys, 11.55 x 11.45 Inches [Hot sale products](#)

★★★★★ 5.00 4 Reviews 7 buyers

1 - 49 Pieces

\$5.47

50 - 299 Pieces

\$5.16

>=300 Pieces

\$4.68

Benefits: [Quick refunds on orders under US \\$1,000](#) [Claim now >](#)

Quantity: Pieces

Samples: [\\$5.47/Piece | 1 Piece \(Min. Order\) | Buy Samples](#)

Lead Time[Ⓢ]:

Quantity(Pieces)	1 - 1	>1
Est. Time(days)	7	To be negotiated

Customization: [Customized logo \(Min. Order: 500 Pieces\)](#)

[Customized packaging \(Min. Order: 500 Pieces\)](#)

Numerals & Counters

Correct

Odd and even numbers become apparent as counters are arranged in rows of two.

Always use correct Montessori color schemes (never random ones)



Incorrect



Avoid Random Junk

Incorrect

Use only beads and cards with numerals (only)

Avoid random confusing junk



Colored Bead Stairs

Do you see the problem with the incorrect material?

The work has become a puzzle instead of a counting and comparison exercise.
The wooden frame deprives the child of the chance to count and order the beads by quantity, so they do not discover the difference in length by themselves.

Correct

Sensory & visual interaction with quantities as children handle, count, and position the beads.



Incorrect



Spindle Box

Correct



Incorrect

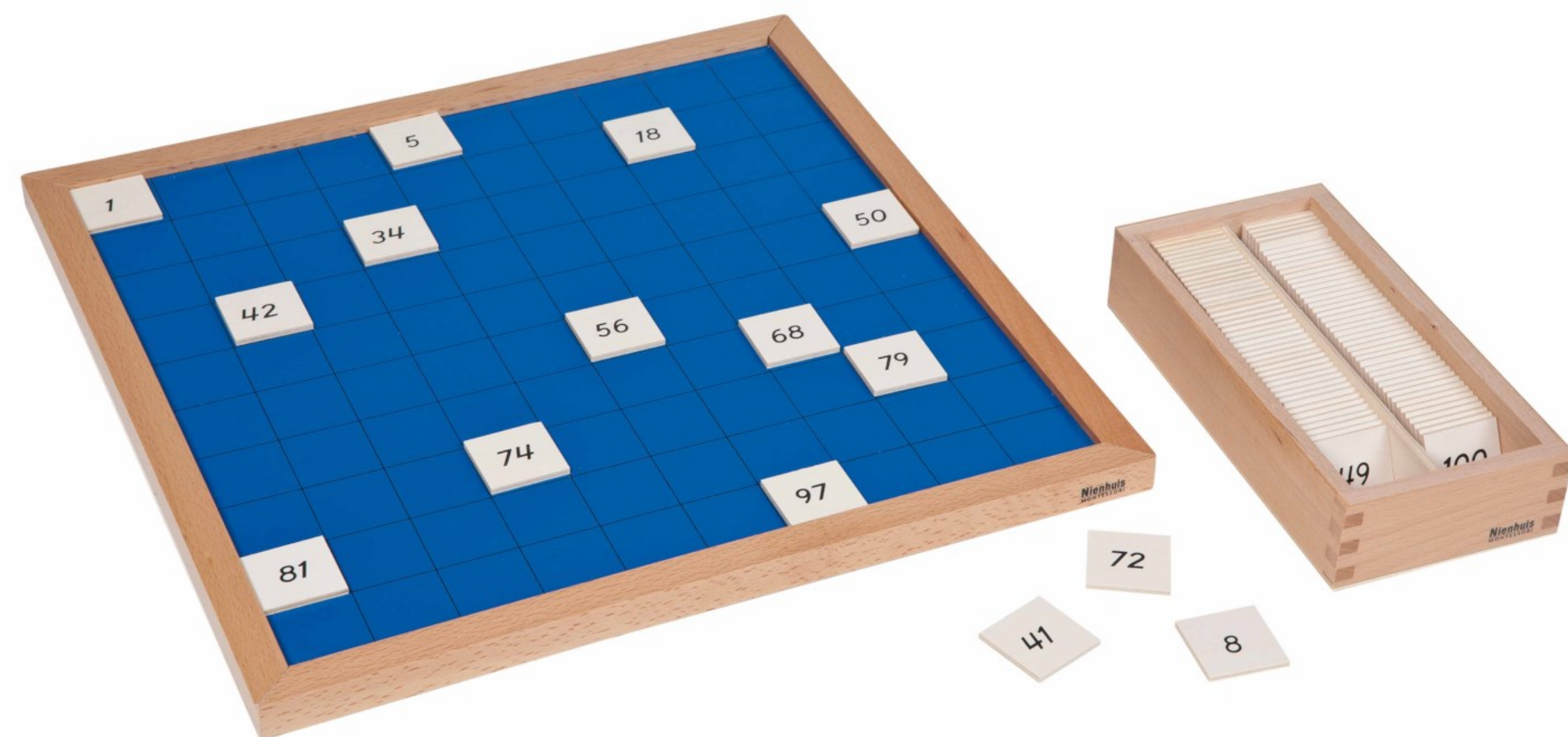
Never create a coloring project out of a math exercise.



Hundred Board: The Correct Format

Beware, beware...

Correct



A blank board with black numbers on white tiles.

Incorrect



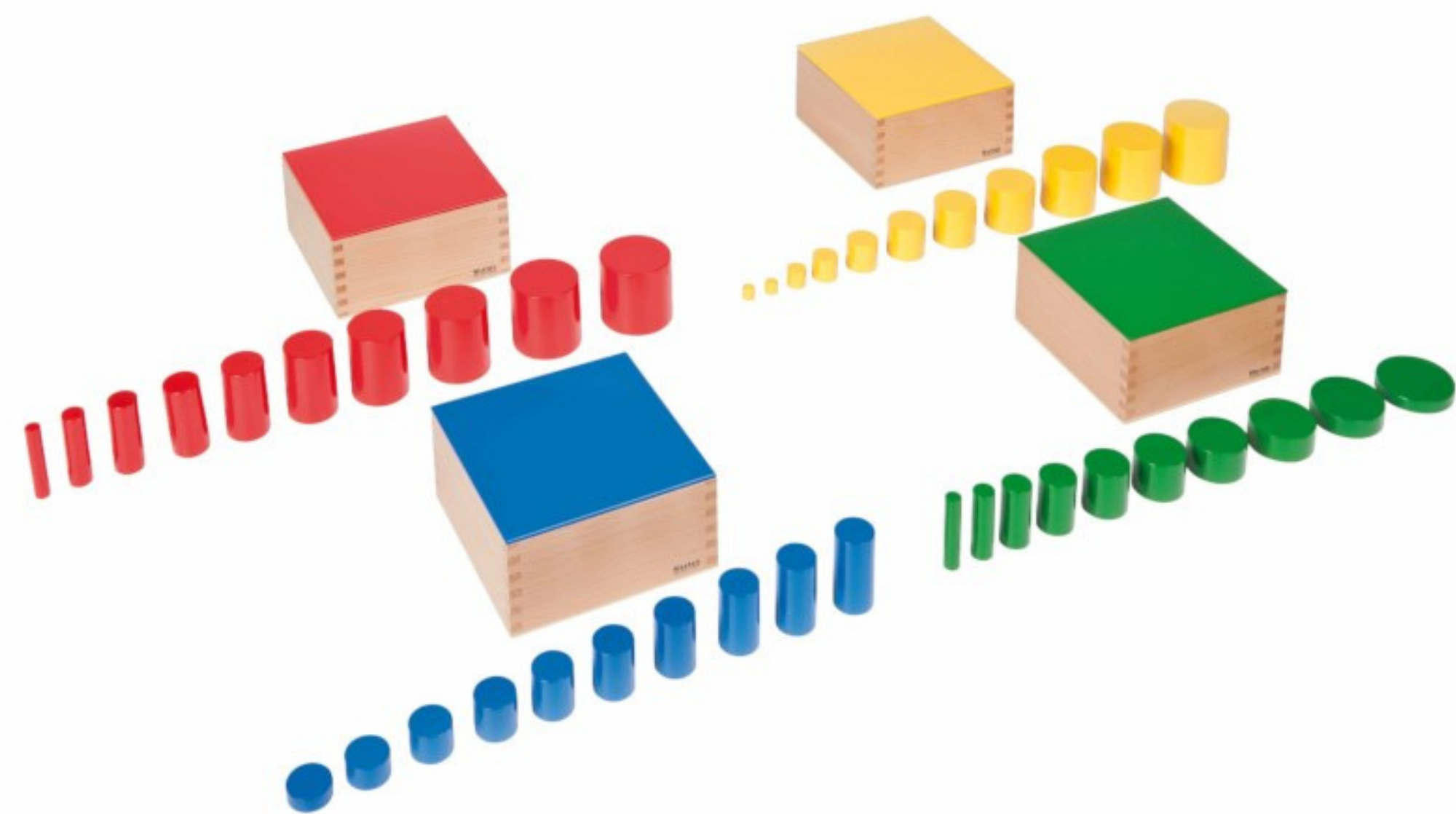
Sensorial Work Requires Tactile Interaction

Never substitute printed sheets for real Montessori equipment.

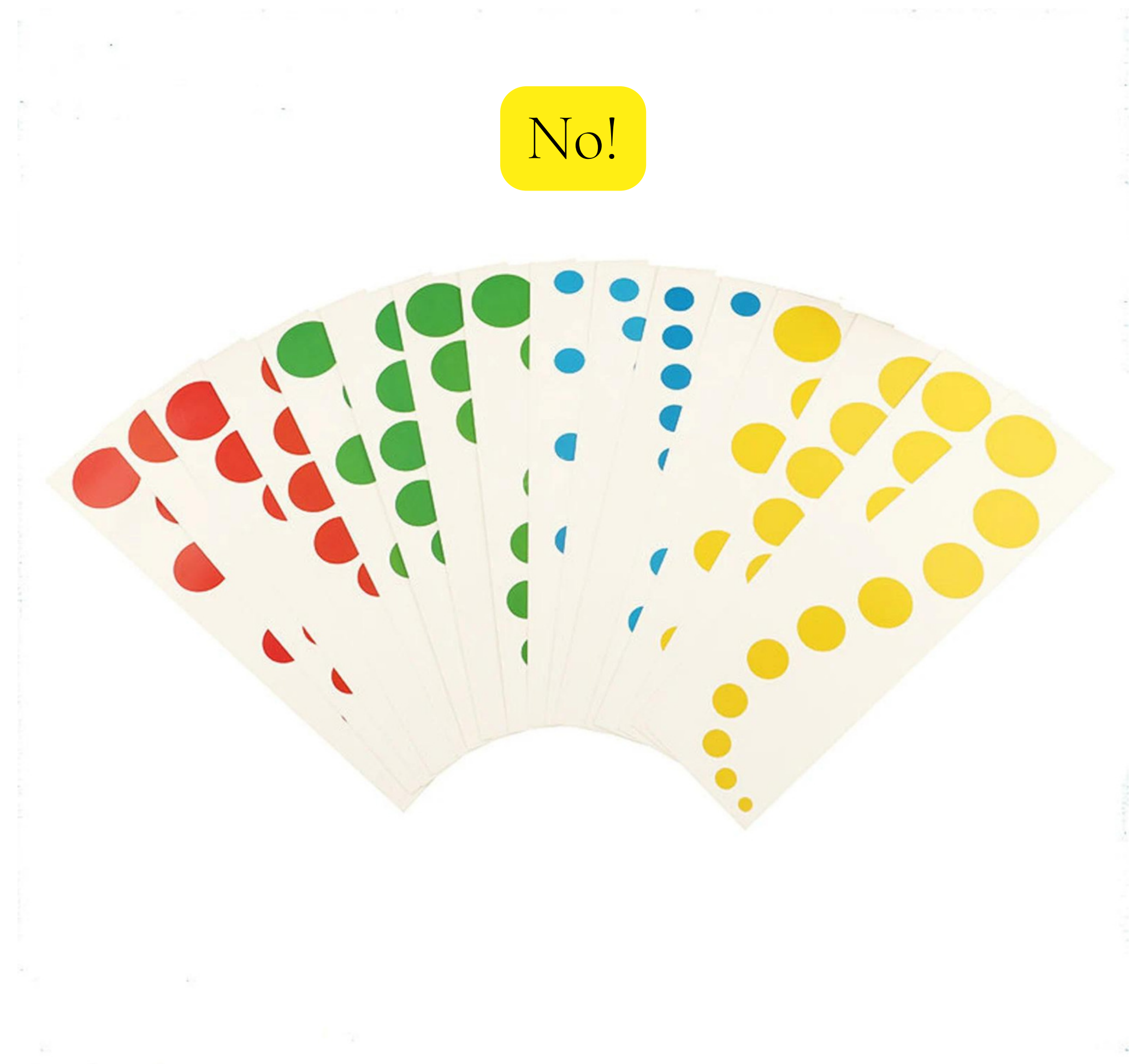
There are NO worksheets in Montessori.

Do you own them? Throw them away.

Correct



Incorrect



Knobbed Cylinders: Not Miniaturized, No Cards

Correct



10 pieces, 4 blocks,
gradations of variance.
No printed material.

Incorrect

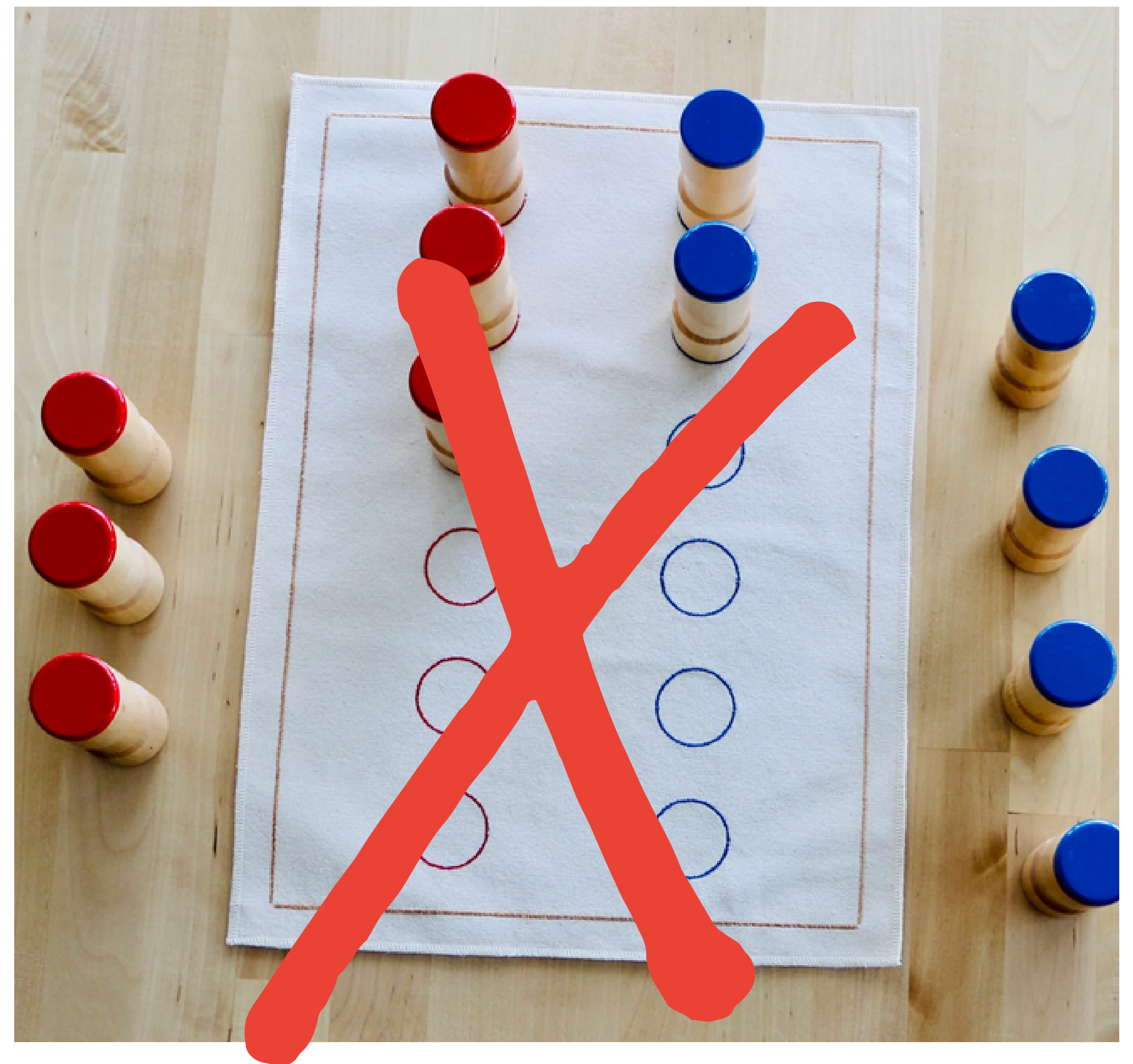


Avoid Random Junk

Incorrect

Random junk is warning sign
of a failing Montessori
teacher.

If you are evaluating schools,
this is a good indicator.



Shelf Mistake: Practical Life



Use Real Work with Real Materials.
Never fill the shelf with plastic busywork.
Children who do useless things feel useless.

Shelf Mistake: Language



These shelves are a crowded mess and full of junk. For example, the sandpaper letters belong in one box (and they are not pink).

Notice that the sandpaper letters are too big.

What on earth is in all those plastic boxes?

I can see that the large word cards are the wrong size. Get RID of this plastic. No wonder kids have hormone problems.

Correct Shelf Display: Language

Classic, authentic Montessori materials and shelf layout



There is one more Language shelf in the Sensorial area.



Correct Shelf Display: Sensorial

Classic, authentic Montessori materials and shelf layout

Final language shelf.

A sensorial shelf. Notice the math work on the back.



Shelf Mistake: Sensorial

Wooden Boxes do NOT equal Montessori

Most of this equipment is random junk.



Correct Shelf Display: Sensorial

Classic, authentic Montessori materials and shelf layout



Simple, minimalist classroom layout
But I would replace these lights with incandescent bulbs.

Montessori Classroom



Correct Shelf Display: Art into Math Area

Junction of three curricular areas at a sunny window

Notice the modern heat pump, not dirty HVAC vents



Correct Shelf Display: Art into Math Area

Junction of three curricular areas and lots of movement space

The large windows are important



A Good Space for Movement

Home spaces should include gardening areas, too!

